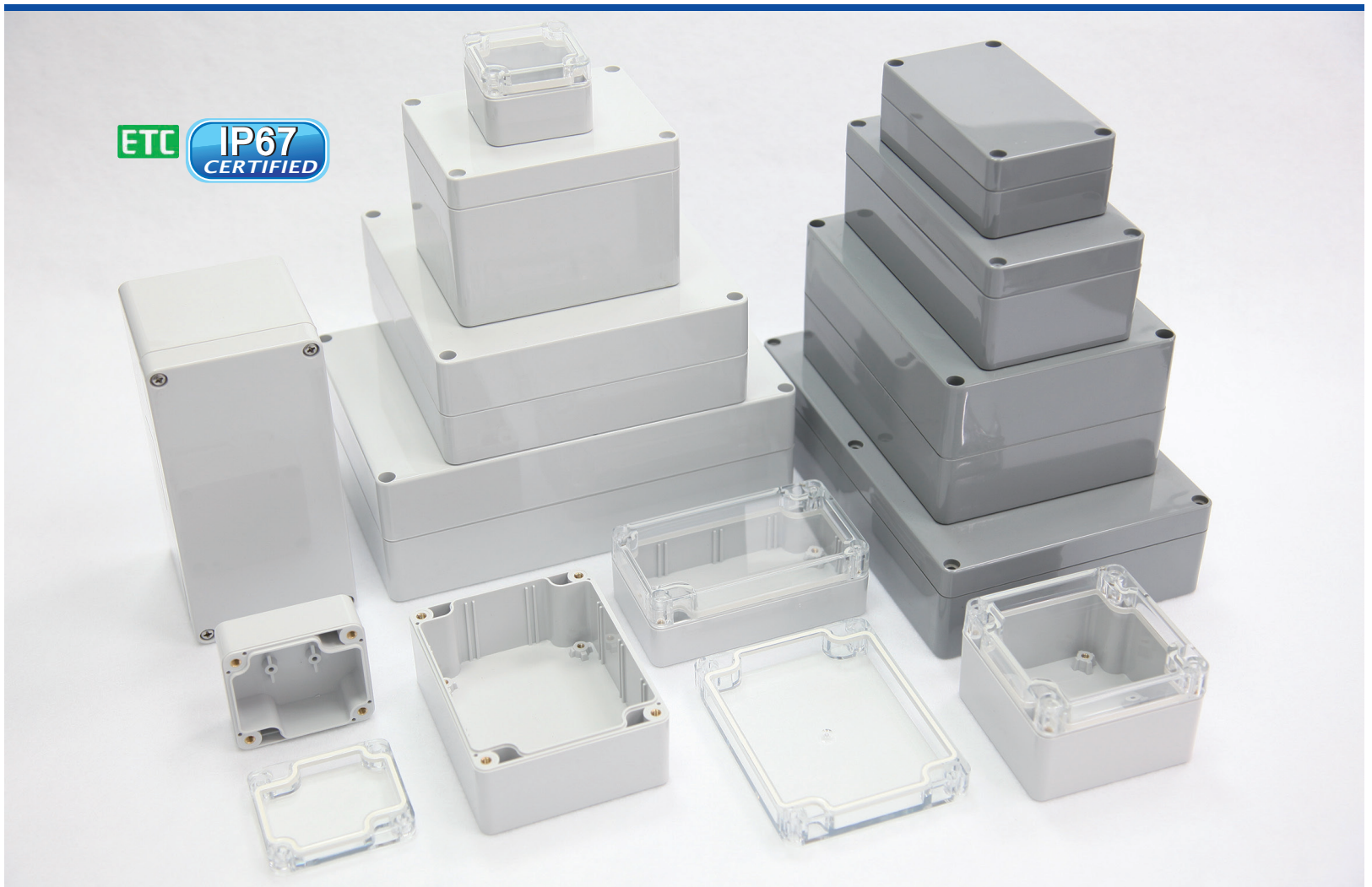


G2XX-IP67 / G3XX-IP67 SERIES

SEALED IP67 POLYCARBONATE AND ABS ENCLOSURES

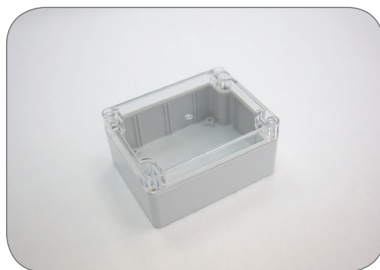


PRODUCT INFORMATION

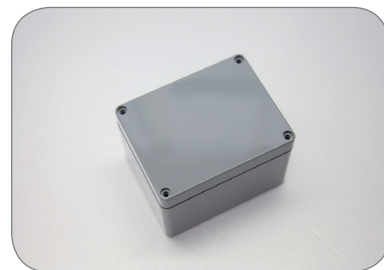
- The lid and base incorporate a tongue and groove sealing system with silicone adhesive.
- Wall mounting holes and lid fixing screws are outside the sealing area thus preventing the ingress of moisture and dust.
- Design to IP67 of IEC 529 (Dust and Hoseproof).
- Bosses on internal base allow fixing of PCB's horizontally or connection of terminals with M3X4mm self-tapping screws.
- Internal guide slots for mounting PCB assemblies vertically.
- Available with clear or light grey lids.



G203-IP67



G212C-IP67



G331-IP67

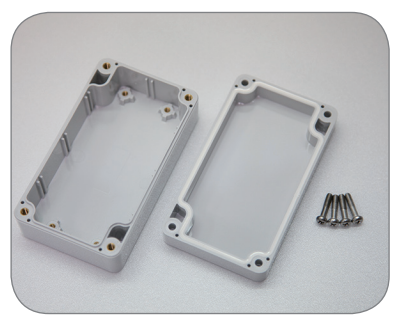
PC
(G2XX-IP67)
(G2XXC-IP67)

- Material : Polycarbonate (UL94-HB)
- Moulded in : Light grey
- Operating temperature : -40°C to 120°C
- Clear lid is available on request

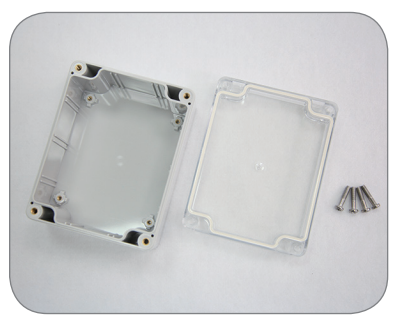
ABS
(G3XX-IP67)

- Material : High Impact ABS (UL94-HB)
- Moulded in : Dark grey
- Operating temperature : -20°C to 80°C

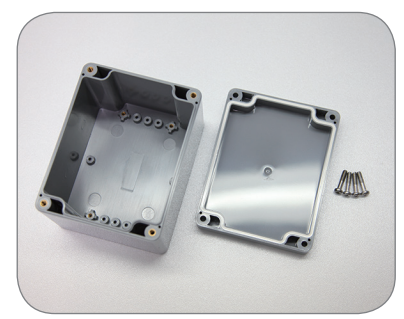
Content



G203-IP67



G212C-IP67



G331-IP67

MATERIAL : POLYCARBONATE		EXTERNAL DIMENSION(mm)	MATERIAL : ABS
Light Grey Lid + Light Grey Base	Clear Lid + Light Grey Base		Dark Grey Lid + Dark Grey Base
Item No.	Item No.		Item no.
G201-IP67	G201C-IP67	64 x 58 x 35	G302-IP67
G203-IP67	G203C-IP67	115 x 65 x 40	G304-IP67
G205-IP67	G205C-IP67	115 x 65 x 55	G308-IP67
G212-IP67	G212C-IP67	115 x 90 x 55	G311-IP67
G214-IP67	G214C-IP67	171 x 121 x 55	G313-IP67
G218-IP67	G218C-IP67	222 x 146 x 55	G317-IP67
G221-IP67	G221C-IP67	115 x 90 x 80	G331-IP67
G223-IP67	G223C-IP67	171 x 121 x 80	G340-IP67
G229-IP67	G229C-IP67	195 x 80 x 55	G346-IP67
G232-IP67	G232C-IP67	222 x 146 x 75	G353-IP67
G250-IP67	G250C-IP67	52 x 50 x 35	G362-IP67
G256-IP67	G256C-IP67	82 x 80 x 55	G366-IP67
G258-IP67	G258C-IP67	160 x 80 x 55	G368-IP67
G265-IP67	G265C-IP67	160 x 80 x 85	G369-IP67
G278-IP67	G278C-IP67	120 x 120 x 60	G386-IP67
G279-IP67	G279C-IP67	120 x 120 x 90	G387-IP67
G287-IP67	G287C-IP67	160 x 160 x 60	G396-IP67
G288-IP67	G288C-IP67	160 x 160 x 90	G399-IP67

▲ Lid fixing screw are M4 stainless steel (non-magnetic) into threaded brass inserts.

Internal testing of the IP67 water resistance

Ingress Protection (IP) Ratings

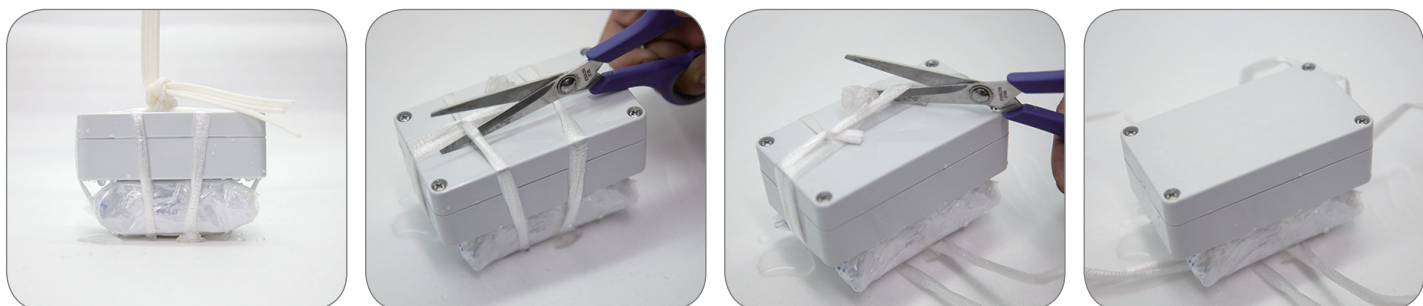
I P 6 7

1 st Digit	Definition
0	No Protection against contact and ingress of objects
1	Protected against any large surface of the body, such as the back of a hand. Protected against solid objects greater than 50mm in size.
2	Protected against access to hazardous parts by a finger or similar object. Protected against solid objects greater than 12.5mm in size.
3	Protected against access to hazardous parts with a tool or thick wire. Protected against solid objects greater than 2.5mm in size.
4	Protected against access to hazardous parts with a wire, screw, etc. Protected against solid objects greater than 1mm in size.
5	Protected against access to hazardous parts. Dust protected.
6	Protected against access to hazardous parts. Dust-tight.

2 nd Digit	Definition
0	No Protection
1	Protected against water drops
2	Protected against water drops at a 15 degree angle
3	Protected against water spray at 60 degree angle
4	Protected against water splashing from any angle
5	Protected against water jets from any angle
6	Protected against powerful water jets and heavy seas
7	Protected against the effects of temporary submersion in water. Test requires 30 minutes at 1 meter depth.
8	Protected against the effects of temporary submersion. Customer specification applies and specific testing may be required.
9K	Protects against high pressures associated with steam cleaning.

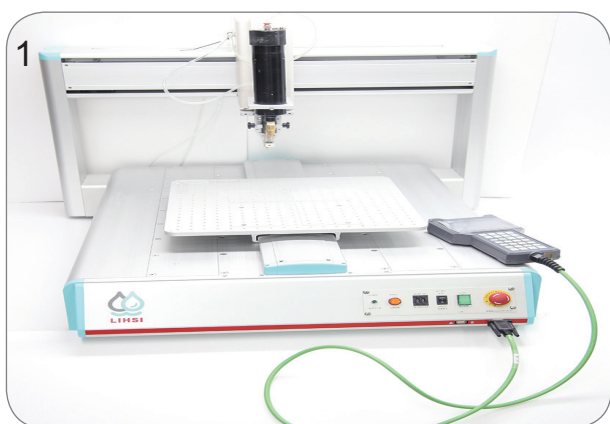


1. Assemble the metal with the testing box , put the testing box into the water tank
2. Make sure the testing box can be installed under the water (1M depth for 30 minutes.)



3. Open and check the box

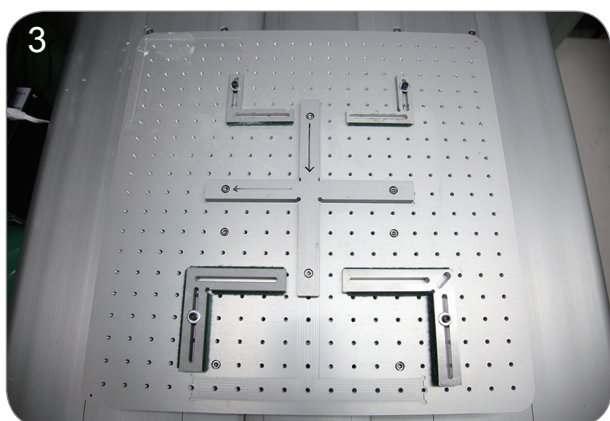
How to install & inspect the silicone adhesive



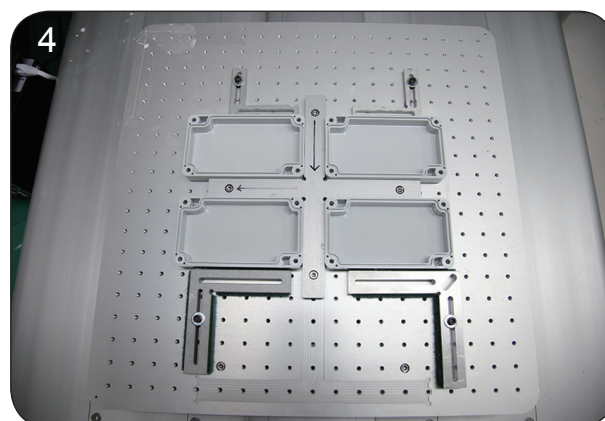
Dispensing Robot Dispenser



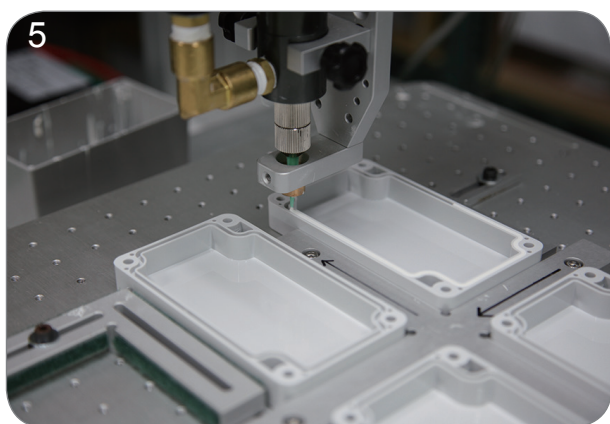
Setup the dispensing program



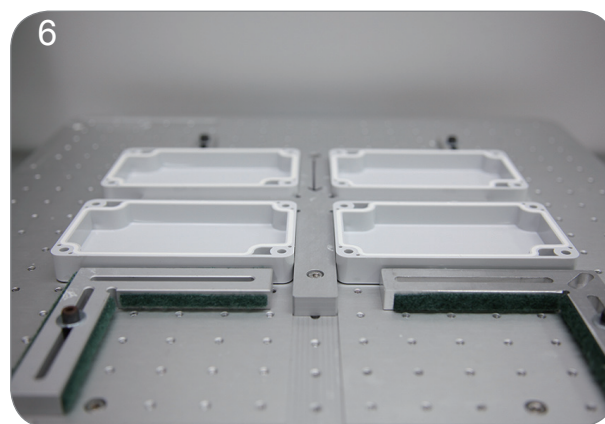
Install the fixtures in the dispenser



Put the covers in the dispenser



Start dispensing



Visual inspection



24 hours drying



Check the depth and make sure the adhesive installation is OK