

MULTI-PURPOSE, DIE-CAST ALUMINIUM BOX WITH MOUNTING FLANGE



PRODUCT INFORMATION

MATERIAL:

- Aluminium alloy ADC-12 to Japan (JIS)

FEATURES:

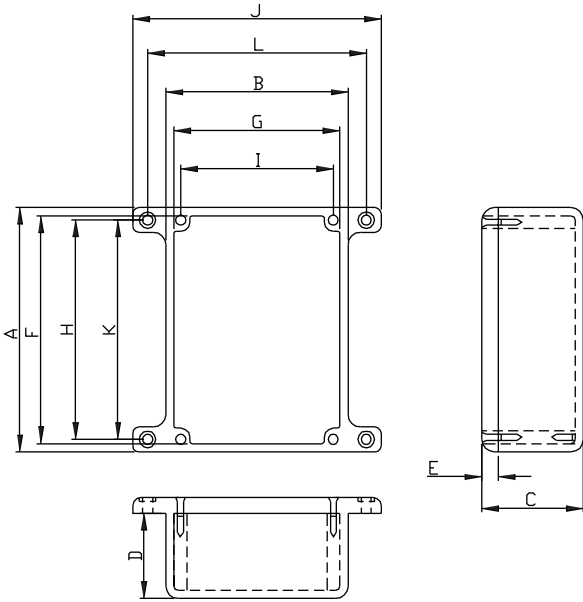
- Ideal for RF projects or for projects which are subject to weather.
- Robust, light weight and easy to machine.
- Ideal for projects involving heat as the case itself makes an excellent heatsink.

APPLICATION:

- Electrical
- Network junction box
- Stomp box (Guitar Pedal)

| ITEM No. | EXTERNAL DIMENSION(mm) |
|----------|------------------------|
| G0123F | 90 x 38 x 30 |
| G0124F | 111 x 60 x 30 |
| G0234F | 119 x 93.5 x 56.5 |
| G0247F | 187 x 118 x 56.5 |
| G0347F | 187 x 118 x 81.7 |
| G0470F | 50.8 x 50.8 x 31.8 |
| G0471F | 110 x 82.5 x 44.5 |
| G0472F | 120.5 x 80 x 59.2 |
| G0473F | 119 x 93.5 x 34 |
| G0474F | 120.5 x 120.5 x 59.2 |
| G0475F | 120.5 x 120.5 x 95.2 |
| G0476F | 152.4 x 82.5 x 50.8 |
| G0477F | 187 x 118 x 38 |
| G0478F | 190.5 x 190.5 x 66.5 |
| G0479F | 111 x 60 x 54 |

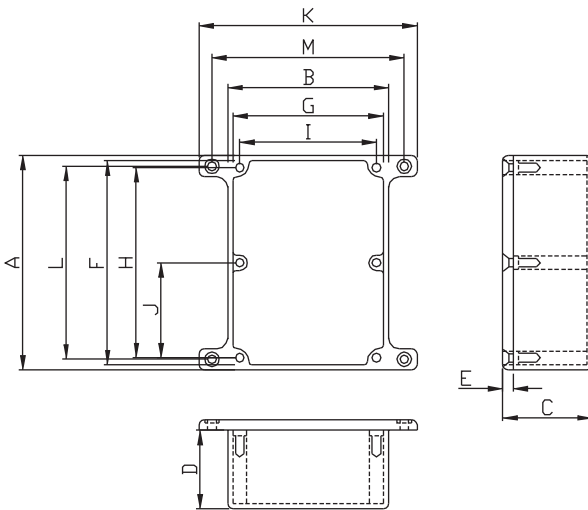
G0123F, G0124F, G0234F, G0470F, G0471F, G0472F, G0473F, G0474F, G0475F, G0479F



Dimension in mm

| PART NO. | A | B | C | D | E | F | G | H | I | J | K | L |
|----------|-------|-------|------|------|-----|-------|-------|-------|-------|-------|-------|-------|
| G0123F | 92.0 | 38.0 | 31.0 | 26.9 | 4.0 | 86.0 | 31.7 | 82.5 | 28.6 | 63.1 | 82.5 | 50.0 |
| G0124F | 111.0 | 60.0 | 30.0 | 26.0 | 4.0 | 107.2 | 56.2 | 101.6 | 50.8 | 84.5 | 101.3 | 72.1 |
| G0234F | 119.0 | 93.5 | 56.5 | 52.5 | 4.0 | 114.2 | 88.7 | 109.5 | 84.1 | 118.5 | 105.6 | 104.7 |
| G0470F | 50.8 | 50.8 | 31.8 | 27.8 | 4.0 | 47.4 | 47.4 | 41.2 | 41.2 | 75.8 | 41.4 | 62.8 |
| G0471F | 110.0 | 82.5 | 44.5 | 40.5 | 4.0 | 105.2 | 77.7 | 100.5 | 73.0 | 107.5 | 100.7 | 94.7 |
| G0472F | 120.5 | 80.0 | 59.2 | 55.2 | 4.0 | 115.7 | 75.2 | 111.1 | 70.5 | 105.0 | 111.3 | 92.1 |
| G0473F | 119.0 | 93.5 | 34.0 | 30.0 | 4.0 | 114.2 | 88.7 | 109.5 | 84.2 | 118.5 | 105.6 | 104.7 |
| G0474F | 120.5 | 120.5 | 59.2 | 55.2 | 4.0 | 115.7 | 115.7 | 111.1 | 111.1 | 145.4 | 111.4 | 132.5 |
| G0475F | 120.5 | 120.5 | 95.2 | 91.2 | 4.0 | 115.7 | 115.7 | 111.1 | 111.1 | 145.4 | 111.4 | 132.5 |
| G0479F | 111.0 | 60.0 | 54.0 | 50.0 | 4.0 | 107.2 | 56.2 | 101.6 | 50.8 | 84.5 | 101.3 | 72.1 |

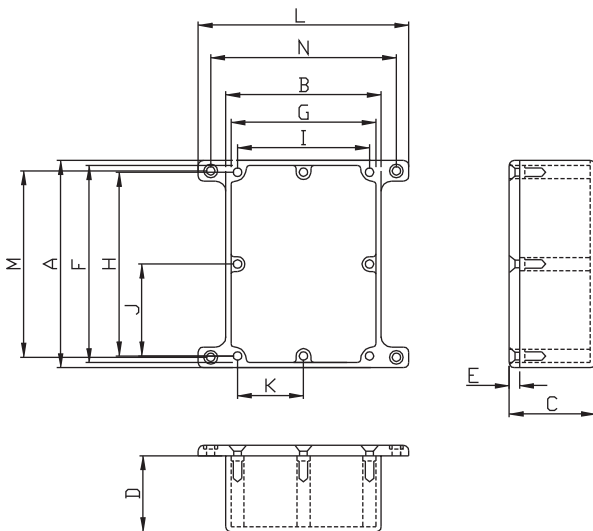
G0247F, G0347F, G0476F, G0477F



Dimension in mm

| PART NO. | A | B | C | D | E | F | G | H | I | J | K | L | M |
|----------|-------|-------|------|------|-----|-------|-------|-------|-------|------|-------|-------|-------|
| G0247F | 187.0 | 118.0 | 56.0 | 52.5 | 4.0 | 182.2 | 113.2 | 177.8 | 109.5 | 88.9 | 143.0 | 178.2 | 130.0 |
| G0347F | 187.0 | 118.0 | 81.7 | 77.7 | 4.0 | 182.2 | 113.2 | 177.8 | 109.5 | 88.9 | 143.0 | 178.2 | 130.0 |
| G0476F | 152.4 | 82.5 | 50.8 | 46.8 | 4.0 | 147.6 | 77.7 | 142.5 | 72.6 | 71.3 | 107.5 | 142.7 | 94.6 |
| G0477F | 187.0 | 118.0 | 38.0 | 34.0 | 4.0 | 182.2 | 113.2 | 177.8 | 109.5 | 88.9 | 143.0 | 178.2 | 130.0 |

G0478F



| PART NO. | A | B | C | D | E | F | G |
|----------|-------|-------|------|------|-------|-------|-------|
| G0478F | 190.5 | 190.5 | 66.5 | 62.5 | 4.0 | 185.7 | 185.7 |
| | H | I | J | K | L | M | N |
| | 180.6 | 180.6 | 90.3 | 90.3 | 215.5 | 180.9 | 202.5 |